

**DO YOU WANT TO BECOME
AUTONOMOUS AND CONTROL
YOUR ENERGY EXPENSES?**

GLOBAL POWER IMPACT

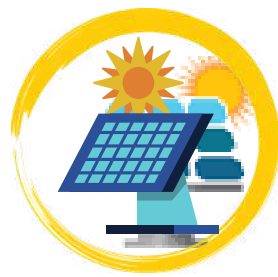


CONTACT US:

- be.meca@little-horse.com
- 04 42 32 02 40

- 230 Avenue du Garlaban
- 13420 Gémenos

A Little Horse company



SOLAR ENERGY

- **Retractable structure**

- **Smart System**

The tracker ensures an optimal orientation of the panels.

- **Possible configurations:**

- Directly on the container
- Foldable panels on the floor
- Placed on a roof



ENERGY SUPPORT

A continuous energy source ensures maximum flexibility to adapt to all consumption profiles.

Options:

- Diesel generator
- Hydrogen engine
- Hydrogen Fuel Cell



BATTERY PACK

The Li-ion batteries allow to support the intermittent characteristic of the solar energy and to store the produced energy to reinject it when your consumption requires it.

AN INNOVATIVE ENERGY MANAGEMENT SYSTEM!

Global Power Impact uses Artificial Intelligence through a neural network that records your consumption habits and optimizes the management of different energy sources by making a predictive study of needs.



GLOBALPOWER[®] **IMPACT** is a transportable hybrid micro-power station that provides an autonomous, reliable and responsible energy source. It adapts to the most extreme conditions and is perfectly suited to off-grid areas as well as to grid-connected sites.

The solution takes advantage of a mix of different energy sources to bring you maximum flexibility. Its Plug & Play feature ensures a simple and efficient handling.

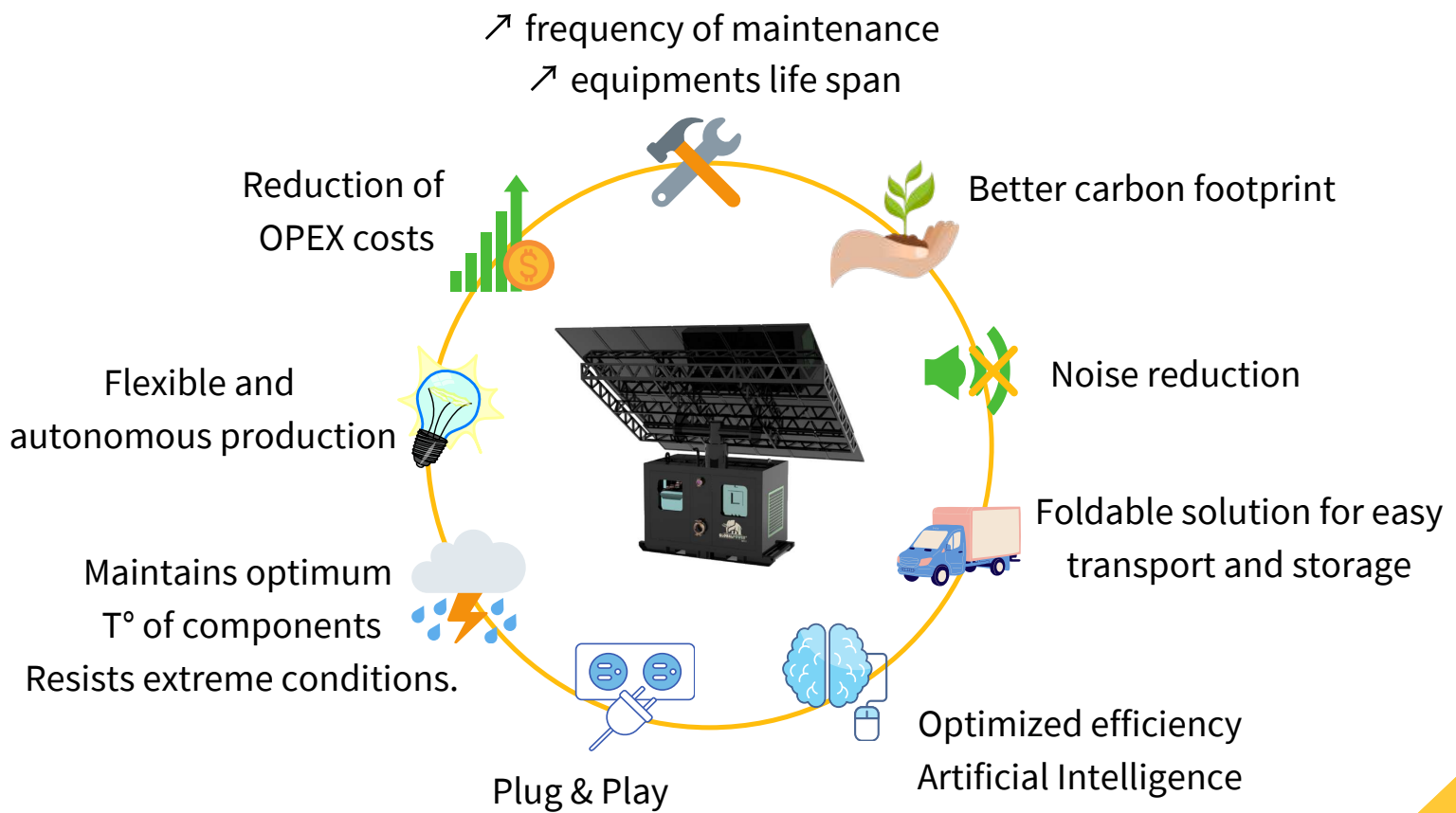
The implementation of Artificial Intelligence in the energy management system ensures maximum optimization and scalability of the installation.

GLOBALPOWER[®] **IMPACT** is custom made in order to meet all your needs, taking into account the technical constraints. Our engineers accompany you throughout the project to offer you a personalized solution.

TECHNICAL SPECIFICATIONS

GLOBAL SYSTEM	
Power _{MAX}	30 - 300 kVA
Output Voltage	48 V _{DC} / 230 - 400 V _{AC} Single / Tri
Output Frequency	50 - 60 Hz
PV Power	2 - 20 kWc
Genset Power	20 - 200 kW
Battery pack Capacity	20 - 200 kWh
Autonomy (at full load)	5 h (batteries) 20 h (support : genset)
Container size	10 - 20 ft
EQUIPMENTS & SPECIFICITIES	
Container	IP 44
	Waterproof and acoustic system (water and fine particles)
Generator	Diesel Stage V
	SynRM IE5 + VFD

MAIN ADVANTAGES



KEY FIGURES



LCOE between 0.15 and 0.30 €/kWh

ROI between 3 and 5 years

Between 25 and 40% savings over 10 years compared to a genset



Reduction of CO2 emissions up to 80%

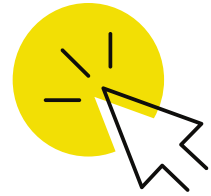


Up to 65% fuel savings

SERVICES

The solution is completed by a range of specific services:

- Remote control of the installation
- Collection and analysis of operating data
- 24/7 emergency service anywhere in the world
- Engineering consulting
- Study of the technical and economic environment for a suitable solution
- Different financing options



You can count on our technical expertise acquired over more than 30 years alongside major players in the building industry for the follow-up of your projects, from the design phase to commissioning.

APPLICATIONS

ISOLATED SITES

Off-grid, mining, telecom, agriculture

RESIDENTIAL

Individuals, hotels, communities

CONSTRUCTION

Construction sites, irrigation, pumping

BACKUP SOLUTION

Data centers, industries, refrigeration

EMERGENCY

Health field, hospitals

EVENTS

Festivals, meetings, organisations

DEFENSE